

# Accent Light With Bump Wedge & Torpedo Cover

## Pre - Installation Notes

- Do not cut any wires. Any extra wire length can be coiled up.
- During installation, it is recommended that you temporarily cover the photocell on the transformer with dark tape so the lights will be on when you plug them in. This will help check for any issues during installation. Remove tape when done.

### Step 1

#### Prepare the Transformer and Wiring Harness

- 1.1 Follow instructions provided with the transformer.
- 1.2 Follow instructions for the wiring harnesses so there is a male connector located at each location that will have a light installed.

### Step 2

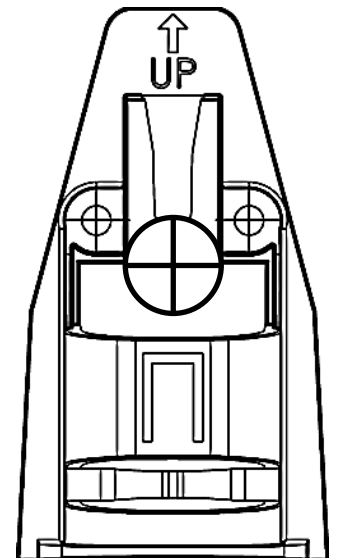
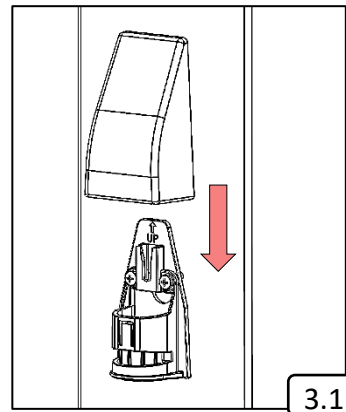
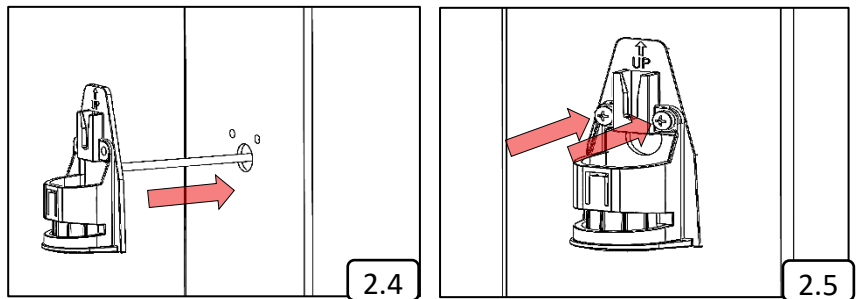
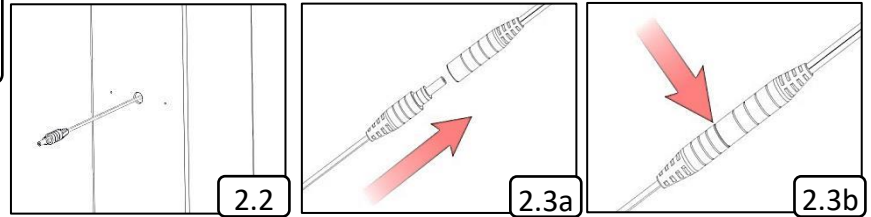
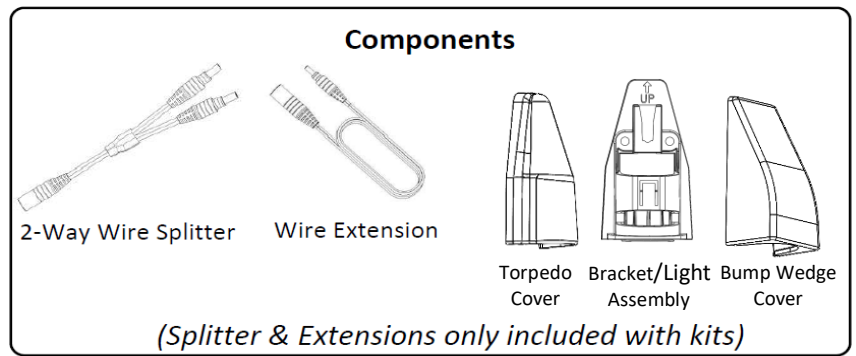
#### Prepare the Post and the Back Plate

- 2.1 Place the template at the desired location and pre-drill two 1/16" holes for screws and one 1/2" hole for the wire.
- 2.2 Run a Harness (not included) down the inside of the post or post wrap with the male connector hanging out of the 1/2" hole that was just drilled.
- 2.3 (a) Plug the male connector (from Step 2.2) into the female connector attached to the light.  
(b) Press firmly until the connection is fully engaged. The light should be illuminated if the transformer is on.
- 2.4 Push the wire connection back through the 1/2" hole until the back of the bracket is flush with the post.
- 2.5 Align the pre-drilled holes. Use the 2 included screws to mount the bracket to the post.

### Step 3

#### Install Cover and Finalize Installation

- 3.1 Align the desired cover with the bracket and slide the cover down onto the bracket. Only one cover will be used (2 are supplied). Each cover will give the same lighting effect. The unused cover can be saved or discarded.
- 3.2 If dark tape was used to cover the photocell on the transformer, remove it for normal operation.



DRILLING TEMPLATE