



DECK LEDGER SPACERS DON'T LET YOUR DECK ROT YOUR HOUSE!

Deck2wall® Spacers will help prevent rot by providing drainage and airflow. Poorly designed ledger connections can trap moisture between your deck and house, which can lead to decay. This condition causes costly repairs to your home and is often a contributing factor when a deck collapses.

IAS ACCREDITED LAB TESTED

- *Rugged, durable and non-corrosive*
- *Faster, easier and stronger than stacked washers*

DECK LEDGERS, SHADE STRUCTURES, POSTS, STAIR STRINGERS, LANDINGS.....

Verify local codes prior to installation

Installation Guide - Model #D2W58

Size - 2 1/2" Diameter X 5/8" Thick Material - Glass Filled Polypropylene

1. Cut ledger to length and lay out deck joists on ledger.
2. Temporarily attach the ledger in the desired location.
3. Drill holes as required for fasteners. Avoid joist locations and vertical grooves in siding if applicable. Refer to Deck Ledger Fastening Table on reverse side for the correct spacing of fasteners. Consult a designer or building official if needed.
4. Remove ledger, center Deck2wall® Spacers over bolt holes and attach spacers to the building side of the ledger. To comply with the D2W58 fastening table, install each spacer with 3-#8 x 1 5/8" Phillips Square-Driv® or GuardDog® screws, or equal. Use only premium exterior coated or 300 series stainless steel (Grip-Rite® PrimeGuard MAX®), 1 5/8" minimum length, #8 or larger.
5. At the building, apply sealant in and around the bolt holes / pilot holes to prevent moisture intrusion.
6. Position ledger against the building. Align bolt /pilot holes and secure fasteners.

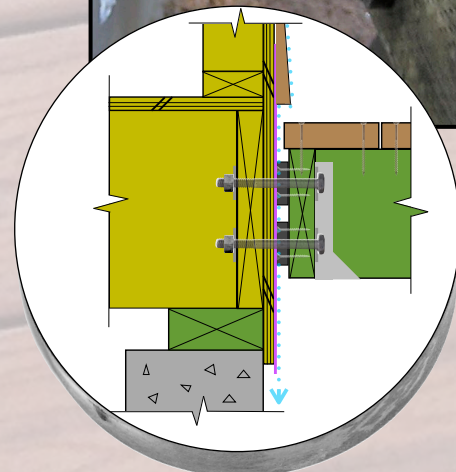
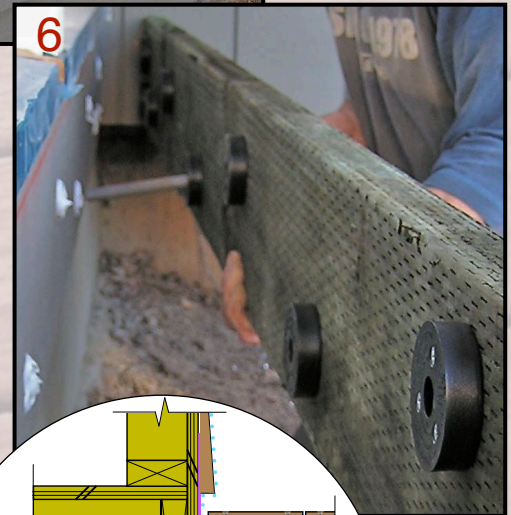
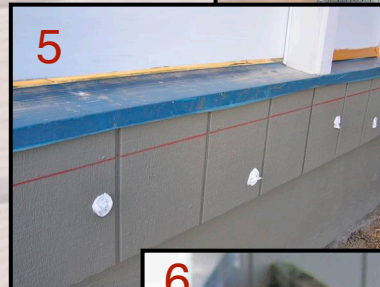
OR

Install each Deck2wall® Spacer to ledger with 3 - #8 x 1 5/8" exterior screws (as noted above) and use spacers as a template to drill through ledger. Position ledger in the desired location and continue drilling as required into supporting structure. Apply sealant and secure fasteners.

Phillips Square-Driv®, GuardDog®, and Grip-Rite® PrimeGuard MAX® are registered trademarks of their respective companies.

Deck2wall, Inc.

Rohnert Park, California
U.S. Patents 6,945,004 and 8,087,207



The fastening table below is based on test data from an ICC-IAS accredited test lab. Testing was performed using established methods which are the basis for the deck ledger connection provisions in R502.2.2.1 of the 2009 IRC and R507.2 of the 2012 IRC.

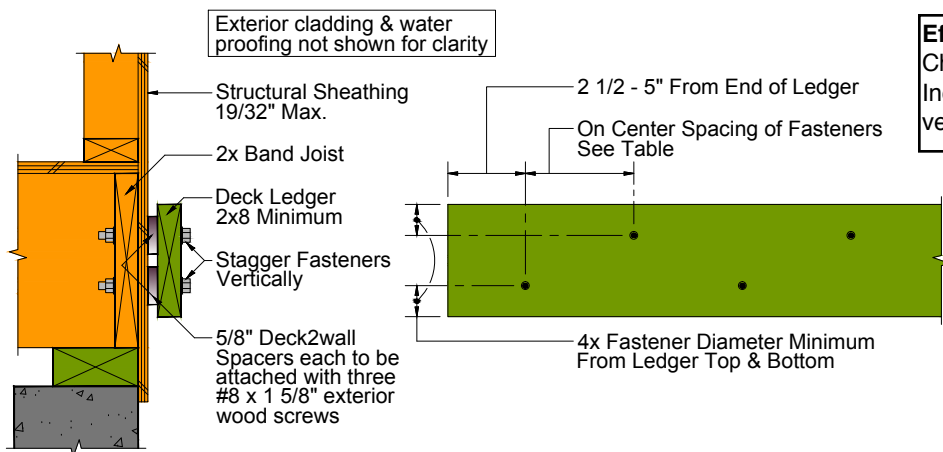


Deck Ledger Fastening Table for Deck2wall® Spacer Model #D2W58

Deck ledger shall be minimum 2 x 8 nominal sawn lumber, pressure preservative treated Hem-Fir, Douglas Fir or Southern Pine. Band joist shall be nominal 2x solid sawn SPF, Hem-Fir, Douglas Fir or Southern Pine.

40 PSF Live Load and 10 PSF Dead Load		60 PSF Live Load and 10 PSF Dead Load						
Joist Span		Up to 6 ft.	Up to 8 ft.	Up to 10 ft.	Up to 12 ft.	Up to 14 ft.	Up to 16 ft.	Up to 18 ft.
Connection Details	Loading Condition	Maximum on center spacing of fasteners (inches)						
5/8 inch Deck2wall® Spacers ¹ 19/32 inch maximum sheathing ² 1/2 inch lag screw ^{3 4 5 6}	40 / 10	36*	36*	36*	32	27	24	21
	60 / 10	36*	34	27	22	19	17	15
5/8 inch Deck2wall® Spacers ¹ 19/32 inch maximum sheathing ² 1/2 inch bolt ^{5 6}	40 / 10	36*	36*	36*	36*	35	30	27
	60 / 10	36*	36*	35	29	25	21	19
5/8 inch Deck2wall® Spacers ¹ 19/32 inch maximum sheathing ² 5/8 inch lag screw ^{3 4 5 6}	40 / 10	36*	36*	36*	35	30	26	23
	60 / 10	36*	36*	30	25	21	19	17
5/8 inch Deck2wall® Spacers ¹ 19/32 inch maximum sheathing ² 5/8 inch bolt ^{5 6}	40 / 10	36*	36*	36*	36*	36	32	28
	60 / 10	36*	36*	36	30	26	23	20

- Deck2wall® Spacers Model D2W58 shall be installed to ledger with 3 - #8 x 1 5/8" Phillips Square-Drive® or GuardDog® screws or equal. Use only premium exterior coated or 300 series stainless steel (Grip-Rite® PrimeGuard MAX®), 1 5/8" minimum length, #8 or larger. Screws must provide suitable corrosion resistance for the preservative treated lumber and environmental conditions.
 - Maximum 5/8" nominal wood structural sheathing shall be fastened per code.
 - The tip of the lag screw shall fully extend beyond the inside face of the band joist.
 - Lag screw connections require a washer under the lag screw head.
 - Lag screws and bolts shall be hot dipped galvanized or stainless steel.
 - Lag screws and bolts shall be placed 4 diameters in from the top or bottom of the deck ledgers, and between 2 1/2 and 5 inches from the ends. End fasteners shall be located near the bottom of the ledger. The lag screws or bolts shall be staggered along the horizontal run of the deck ledger, similar to IRC R507.2.1. See figure below.
- * These spacings were limited for consideration of the bending strength of a 2 x 8 minimum ledger between fasteners.



Effective January 1, 2016.
Check our website or contact Deck2wall, Inc. to ensure this is the most recent version of our fastening table.

Tested at ICC-IAS accredited Composite Materials and Engineering Center (CMEC) at Washington State University. Phillips Square-Drive®, GuardDog® and Grip-Rite® PrimeGuard MAX® are registered trademarks of their respective companies.